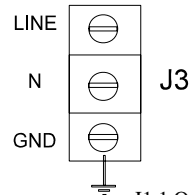
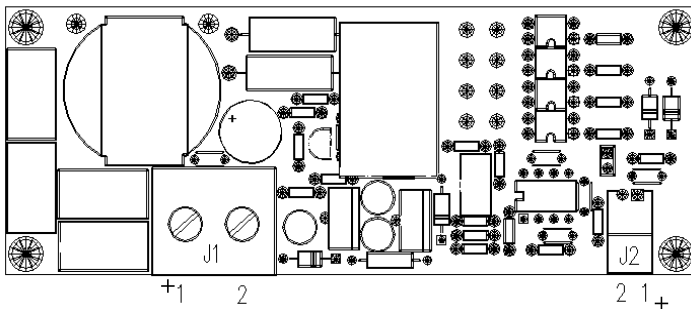




## 700W ADJUSTABLE AC/DC POWER SUPPLY SERIES

AC INPUT:	Universal input 90-264 VAC (50/60 Hz)
LINE HARMONICS:	EN 61000-3-2
CONDUCTED EMI:	EN 55022 CLASS A, EN 50081-1, EN 50082-2, CE LVD compliant.
EFFICIENCY:	78% min.
INRUSH CURRENT:	40A max. (230 VAC)
UNDER VOLTAGE LOCKOUT:	80VAC typ.
HOLD UP TIME:	15mSec typ. (110VAC), 22mSec typ. (220VAC)
COOLING:	Two internal built-in 2.4" dia. fans (40 CFM total)
SAFETY:	EN 60950, UL 60950
SAFETY APPROVALS:	UL, cUL, TUV
OUTPUT VOLTAGE:	10-100V (4UPFB-7777 Model), 5-50V (4UPFB-4444 Model)
OUTPUT POWER:	650W (max.)
OVERCURRENT PROTECTION:	105-125% of full load. Shut down and automatic restart. Continuous short with no damage.
OVERVOLTAGE PROTECTION:	120% of nominal output voltage. Non-latching. Auto-retry.
OVER TEMPERATURE PROTECTION:	Latching. Recovery by resetting input AC power.
RIPPLE AND NOISE:	0.25% (max.) 0 - 100% load (pk-pk, 20 MHz BW )
REGULATION:	Line 0.2% max., Load 0.2% max.(no load to full load), Thermal 0.02% / °C max.
REMOTE SENSE:	Compensates for 500mV cable drop ( max.)
REMOTE ADJUSTMENT RANGE:	10% to 100% of nominal output voltage. Controlled by applying external DC voltage to J2.
REMOTE ADJUSTMENT VOLTAGE:	0.25 – 2.5VDC at J2
REMOTE ADJUSTMENT ACCURACY:	± 1%
ENVIRONMENTAL:	Storage temperature: -40 to 85°C. Operating temperature: -0 to 50°C. Humidity: 5 to 95% non-condensing.
DIMENSIONS:	2.50" × 5.88" × 9.4 "



- J1.1 OUTPUT TERMINAL, POSITIVE
- J1.2 OUTPUT TERMINAL, RETURN
- J2.1 REMOTE ADJUSTMENT INPUT, POSITIVE
- J2.2 REMOTE ADJUSTMENT INPUT, RETURN  
(INTERNALLY CONNECTED TO J1.2)
- J3 AC LINE

### ELECTRICAL WIRING DIAGRAM